



Kenton C. Ward, CFM  
Surveyor of Hamilton County  
Phone (317) 776-8495  
Fax (317) 776-9628

Suite 188  
One Hamilton County Square  
Noblesville, Indiana 46060-2230

### Map Correction-Field Verification

Drain Number: #60

Drain Length: N/A

Drain Name: County Mc Mahon

Change +/-: N/A

Date: 11-19-08


New Length: N/A

Verified By: SAB

---

Notes & Sketch: See attached map.

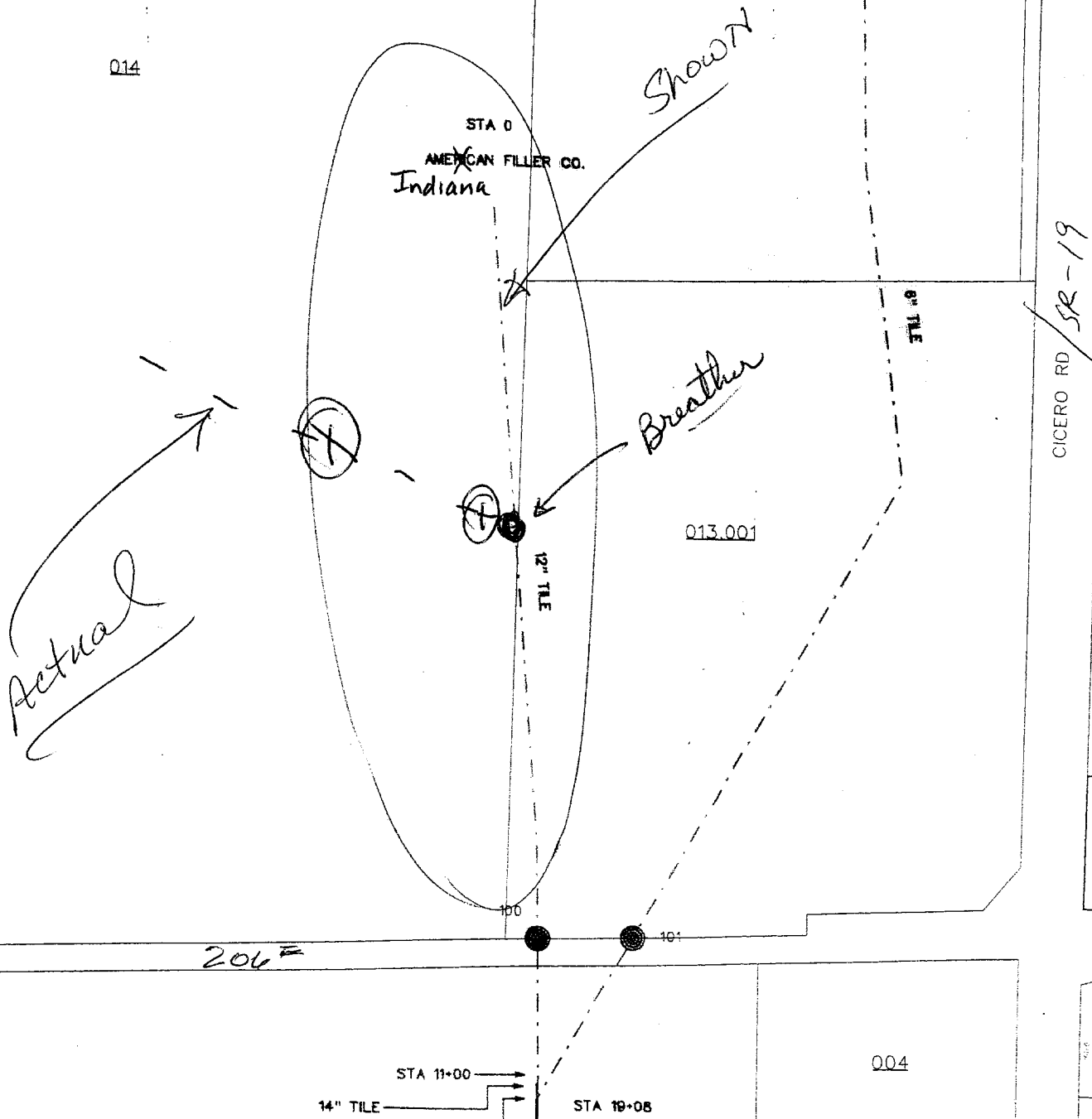
The location of the Indiana Filler Tile was verified in the field by Steve Baitz. The location was verified when the Breather was set.

  
Suzanne L. Mills  
GIS Specialist

County *Wayne* # 60  
Map Correction NEEDED

Q13 STA 0  
ARM 1  
AMERICAN FILLER CO.

Q14



Plat of.  
Indiana Filler Co. Drain

